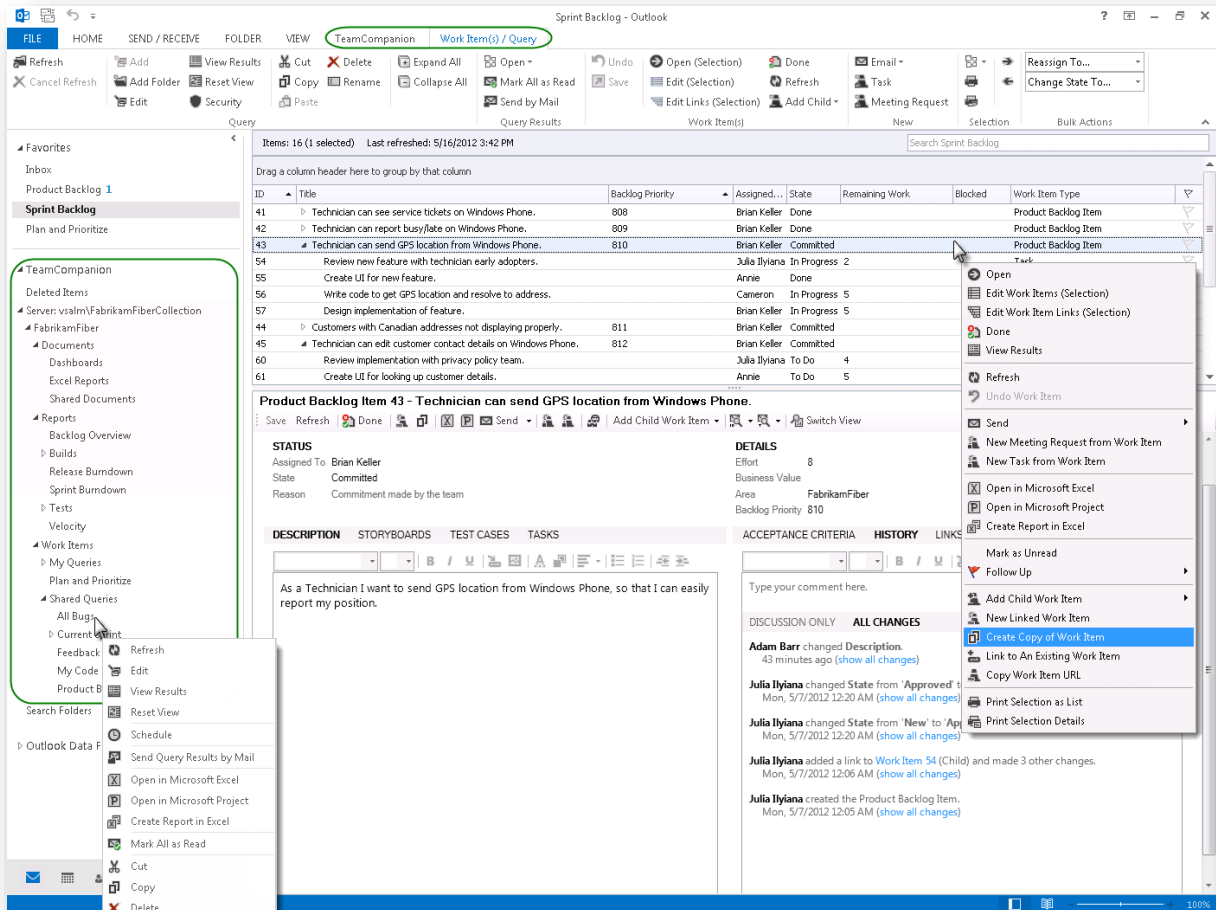


TeamCompanion is a first class Microsoft Visual Studio Team Foundation Server (TFS) client within Office Outlook. In addition to the TFS client features, TeamCompanion leverages Outlook features providing unique capabilities that lead to better collaboration, efficient Agile Project Management and increased productivity in daily tasks.



TeamCompanion key features include:

- Support for TFS 2013 and Outlook 2013
- Work with multiple TFS instances and multiple Team projects
- Support for Team Foundation Service (www.visualstudio.com)
- **Work Item Management**
 - View, edit and create work items and work item queries
 - Work item hierarchies
 - Offline support
 - Work Item access, grouping and search
 - Work Item editing
 - Scheduled Work Item query execution
 - Powerful online and offline work item search including full-text search
- **Agile Project Management**
 - Backlog prioritization using drag and drop
 - Product and sprint backlog planning using graphical tools
 - Progress tracking with real time burndown chart
 - Fully compatible with TFS 2013 agile PM features
- **SharePoint integration (documents, project portal)**
- **SQL Server reports and Work Item query reports in Excel**
- **Email and Work Item Integration**
 - Create Work Item from Email
 - Attach Email to Work Item
 - Create Email, Task or Meeting Request from Work Item
 - Work item Reminders, To-Do Bar view and Favorite Folders integration
- **Integration with Excel and Project**

TeamCompanion & Outlook

One of the most popular e-mail clients today is Microsoft Outlook. TeamCompanion extends it and lets all project stakeholders (particularly business ones) take part in software development project using their favorite e-mail management tool. TeamCompanion combines Outlook artifacts such as e-mail, appointment or reminder with TFS artifacts like work items, work item queries, reports or builds.

Common scenarios

Create a work item from an e-mail including all e-mail attachments

Create an e-mail from a work item including all work item attachments

Work with work items in online and offline mode: access, edit, group and search work items

Use fulltext search or advanced search techniques to find work items

Immediately access important project information using preconfigured reports

Plan your sprints and prioritize project and sprint backlog using velocity chart and drag and drop

Track project progress using scheduled work item queries

„TeamCompanion brings even more 'team-ness' into Team System. **TeamCompanion bridges the collaboration of stakeholder and development worlds.** It's a great idea.“

Sam Guckenheimer

Group Product Planner, Visual Studio Product Line, Microsoft

Author: Software Engineering with Microsoft Visual Studio Team System

TeamCompanion users

Microsoft Visual Studio Team Foundation Server, along with other Microsoft server and client products (Project Server, Visual Studio, Office applications and other tools), covers all ALM areas, from the requirements management, application architecture up to the release management and IT support. **TeamCompanion, with its Outlook – TFS integration capability and the promise of taking collaboration between all software development project stakeholders to a new level, naturally fits into the Microsoft ALM solution offering.** Moreover, TeamCompanion is recommended for use by virtually all software development project stakeholders throughout all ALM areas.

For example, gathering requirements from business analysts or clients is easily done using TeamCompanion. Every e-mail containing new requirements can be, per mouse click within Outlook, stored as a new work item by a requirements engineer. CIO, as an executive sponsor, can regularly check the project progress using TFS reports within the TeamCompanion (and Outlook). Here is the list of all roles that benefit from using TeamCompanion.



TeamCompanion user roles

Prerequisites

TeamCompanion installs on **Outlook 2003, 2007, 2010 and Outlook 2013**.

TeamCompanion works with **Visual Studio Team Foundation Server TFS 2013 and earlier versions and Team Foundation Service (www.visualstudio.com)**.

Comparison sheet

The best way to appreciate the breadth and depth of the TeamCompanion's feature set is to compare it to the standard TFS clients feature set. Standard clients include Visual Studio Team Explorer, Team Web Access and Office Excel and Project applications. On the following page you can find an excerpt from the comparison sheet available at www.teamcompanion.com/blog.

Tasks	Team Explorer	Team Web Access & SharePoint Portal	TeamCompanion & Outlook	Office Excel & Project
Connect to a team project	Required	Required	Required	Required
Access multiple TFS servers simultaneously			Yes	
Work offline, when you are disconnected from Team Foundation Server			Yes	Yes
View process guidance and project portals (requires SharePoint Products)	Yes	Yes	Yes	
Access report site (requires SQL Server Reporting Services)	Yes	Yes	Yes	
Work with SharePoint document libraries	Yes	Yes	Yes	
Share documents and reports	Yes	Yes	Yes	
Set areas and iteration paths	Yes	Yes	Yes	Yes
Add, modify, copy and view work items	Yes	Yes	Yes	Yes
Group work items in lists			Yes	
Link work items, edit work item hierarchies and attach files to work items	Yes	Yes	Yes	Yes
Attach to work items using drag and drop	Yes		Yes	
Create work item lists and search work items	Yes	Yes	Yes	Yes
Full text search for work items	Online only. Searches in some fields only.	Online only. Searches in some fields only.	Online and offline. Searches in all work item fields.	
Preconfigure reports for one click access			Yes	
Share work items and work item queries	Yes	Yes	Yes	
Organize queries into folders and subfolders	Yes	Yes	Yes	
Restrict access to shared queries and query folders	Yes		Yes	
Export or import work items to or from Office Excel or Office Project	Export		Export	Import
Set alerts to notify you when changes are made to work items	Yes	Yes	Yes	
Generate reports from a work item query	Yes		Yes	Yes
Manage backlog item priorities using drag and drop		Yes	Yes	
Access builds	Yes	Yes	Open build report from notification mail	